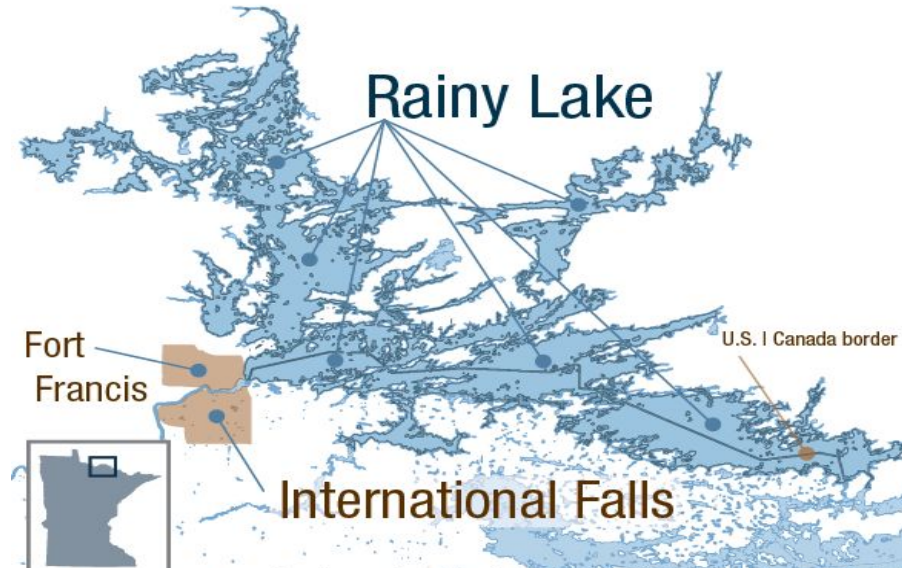


# Rainy Lake

By: Davinia Gangl

# Location:

Rainy Lake is located 133 miles from Nashwauk, near International Falls.



# Rainy Lake Area:

Rainy lake is 230,300 acres.

That includes 18,949 acres of littoral area.

# Secchi Disc:

I could not find an exact reading for the secchi disc. I did find that it was greater than 4, which means it is on the clearer side of the spectrum.

# Inlets and Outlets:

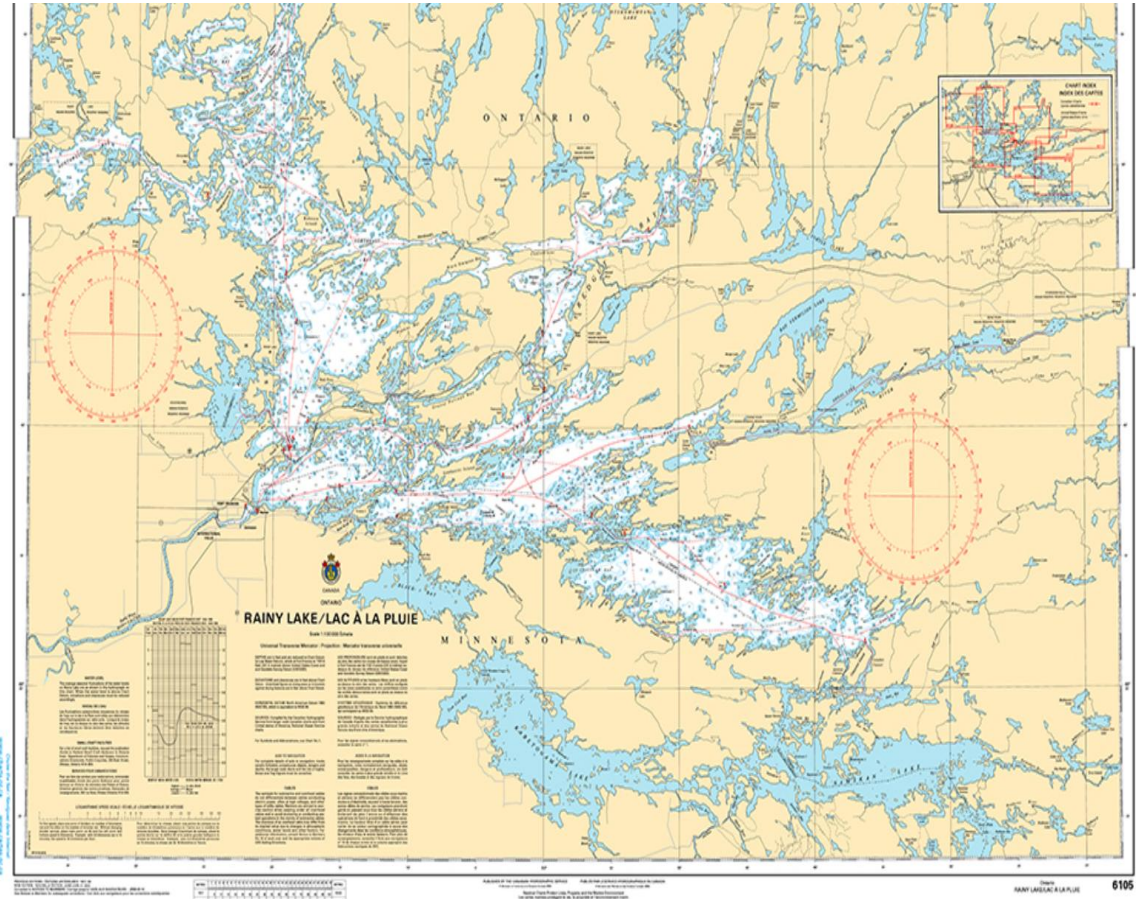
On Rainy Lake, there is a natural flow constriction located at the outlet of Rainy Lake or otherwise known as the Ranier rapids. A greater volume of water can be discharged through the International Falls/Fort Frances dam than can come through this natural constriction. This can cause the level of the Rainy River to drop in elevation between the outlet of Rainy Lake and the dam.



# Depth:

Average depth: 32 feet

Maximum depth: 161 feet



# Slot Limit:

Walleye and Sauger: Combined possession limit eight (not more than four can be walleye). All walleye from 18-26" must be immediately released. One walleye over 26" allowed in possession.

# Public Accesses:

There are boat ramps and landings.



# Fishing Species:

Walleye, Northern Pike, Smallmouth Bass, Rock Bass, Sauger, Crappie, Yellow Perch.

# Stocking:

From what I found, Rainy Lake has not been stocked.

# Rainy Lake Resorts/Campgrounds

A resort I would like to visit is the Sha Sha Resort. It is located on the tip of Dove Island, across the bay from Voyageurs National Park, this laid-back, waterfront resort lies 12 miles from downtown International Falls. Cozy, air-conditioned cabins come with kitchens, satellite TV and outdoor grills. Most have screened-in porches. The main lodge houses a relaxed restaurant serving American fare. There's also a lively sports bar. Other amenities include a boat ramp, docks, fish cleaning house and boat/canoe rental (fee).



# Invasive species:

## Spiny waterflea



**Spiny waterfleas can often collect in masses on fishing lines, allowing unaware anglers to spread them to other lakes.**

## Ice Out:

On average, ice leaves Rainy Lake by the end of April or the first part of May, and anglers on either side of the border can target bass, pike and crappies during this time. Gamefish of all types haunt the warming shallows, so look for fish in back bays and protected areas.

<https://m.youtube.com/watch?v=h3g4chINC7>

Cool video!